



Maximising the value of research outputs: Wellcome's perspective

Belmont Forum e-Infrastructures and Data Management publishing policy meeting

21 June 2018

David Carr

Programme Manager - Open Research, The Wellcome Trust

d.carr@wellcome.ac.uk

ORCID: 0000-0003-1435-307X



Slides made available under <http://creativecommons.org/licenses/by/4.0/>

Wellcome's commitment to Open Research

- committed to ensuring research outputs (papers, data, code & materials) can be accessed and used in ways that maximise health & societal benefit
- making these outputs more widely available holds the potential to:
 - accelerate discovery and its application
 - help ensure findings can be validated and reproduced
 - increase efficiency – reduce duplication and waste
- passionate long-term champion of open access & research data sharing



Wellcome's success framework



Knowledge and discoveries are shared, accessed and used in a manner that maximises health benefit

- Researchers are equipped, empowered and motivated to make research outputs open.
- Research outputs are findable, accessible, interoperable and re-usable (FAIR)

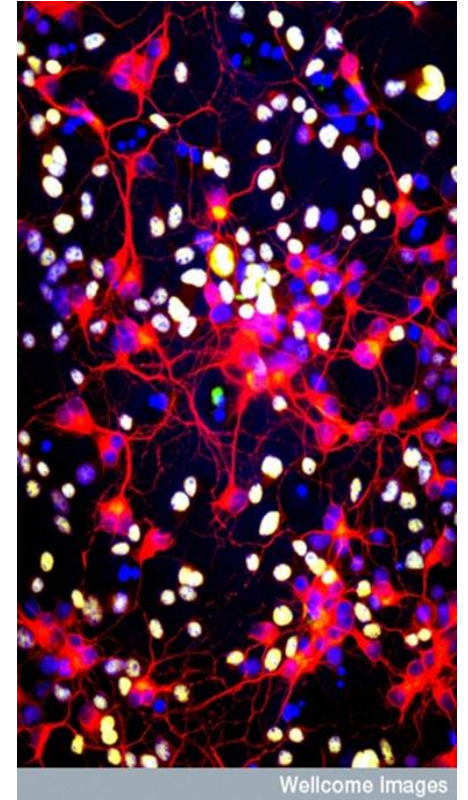
Managing and sharing research outputs – Wellcome policy

- launched an new policy on managing and sharing data, software and materials in July 2017
- extended our previous policy on data management and sharing to other research outputs
- key elements of the policy are:
 - we expect all researchers we fund to maximise access to research data, software and materials with as few restrictions as possible
 - we require an **outputs management plan** - where the research is likely to generate significant outputs of clear value as a resource
 - we commit to review and support costs of output management plans as integral part of grant



Strengthening our requirements

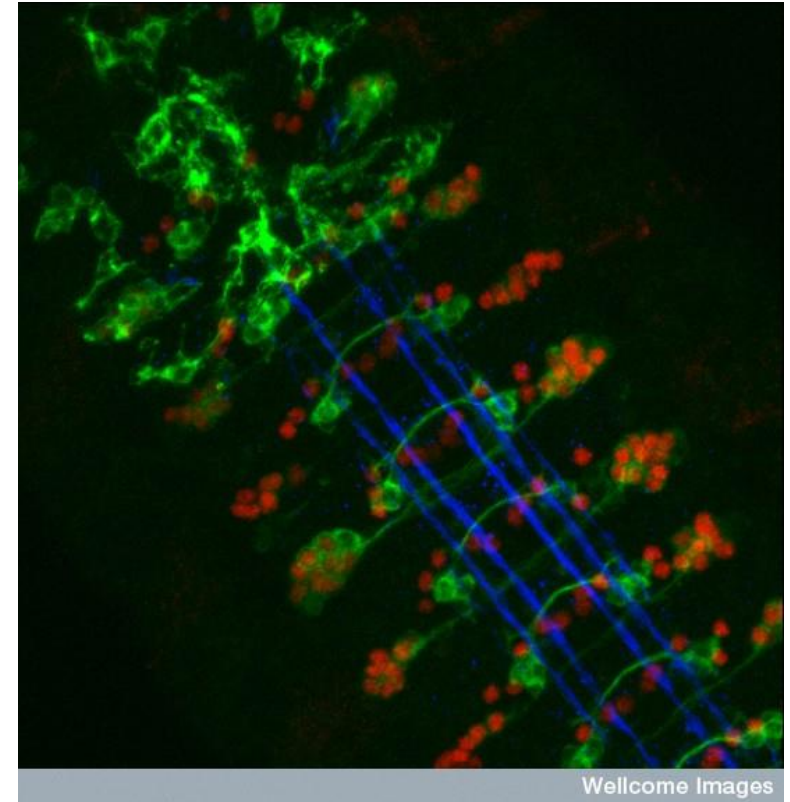
- in revising our policy, we made clear that:
 - data and original software underlying publications must be made available at the time of publication
 - data relevant to a public health emergency should be shared as widely and rapidly as possible, irrespective of timing of publication
 - outputs should be discoverable, have persistent identifiers and be placed in recognised community repositories wherever possible
- we also committed to introduce a check at final report stage to examine the extent to which outputs have been shared in line with the policy



Wellcome Images

Implementing our policy – our experience

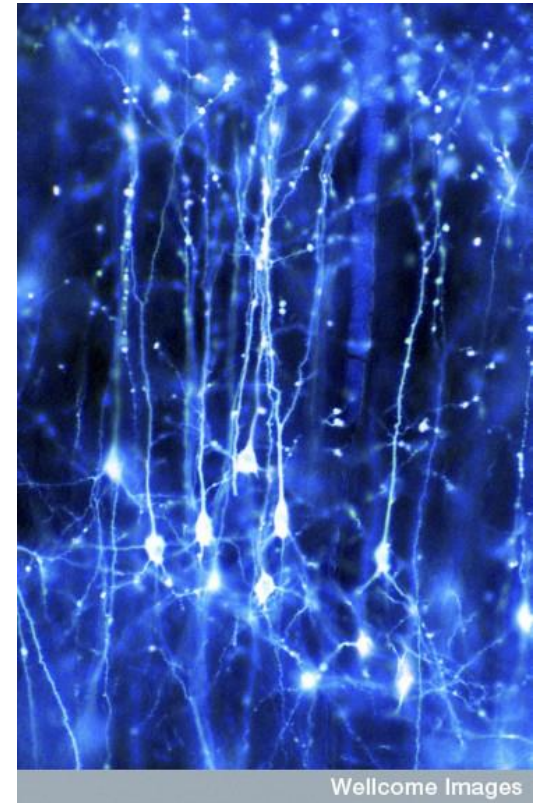
- quality of outputs management plans has increased but remains variable
 - format and level of detail varies significantly
 - not clear applicants, reviewers or staff always know what good practice looks like
 - continuing uncertainty over whether costs are being anticipated and requested
- ongoing discussions over how plans are reviewed and where responsibility should lie
- follow-up has been patchy to date and questions around encouragement vs enforcement



Dr Andrea H. Brand, Wellcome Images

Addressing wider barriers to outputs sharing

- there are significant hurdles to outputs sharing
 - reward and assessment structures
 - developing & sustaining infrastructures required
 - shortage of skills and lack of career paths for data specialists
 - addressing ethical concerns
- different disciplines in very different places in terms of availability of resources and enabling cultures
- evidence base for value of openness is still lacking
- committed to working with other funders, journals researchers and institutions to address these challenges.

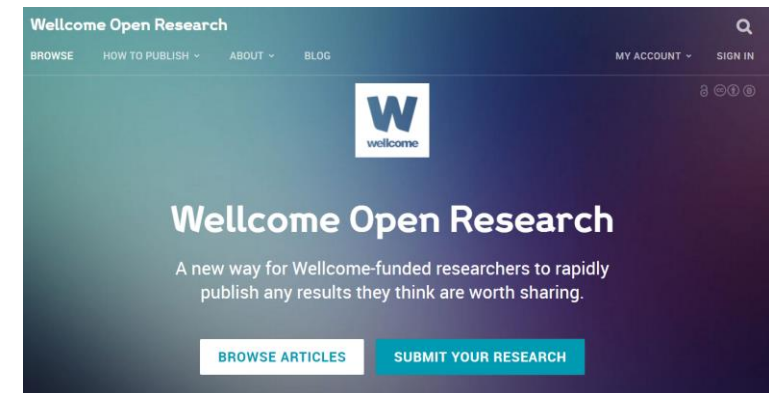


Wellcome Images

Dr Jonathan Clarke, Wellcome Images

Developing Open Research

- Dedicated **Open Research team** established at Wellcome in 2017 to lead and coordinate work:
 - **Funder-led activities** – developing major initiatives in areas where funders can take a lead in supporting the community and driving change.
 - **Community-led activities** – supporting researchers and innovators to develop and test cutting-edge approaches to openness; piloting discipline-specific initiatives.
 - **Policy leadership** – taking a lead in developing our policies and practices as a funder to support, incentivise and sustain open research.
- Partnership, engagement and evidence-building at heart of our approach



New funding opportunities

- Research Enrichment – Open Research ([link](#))
 - open to Wellcome grantholders and applicants
 - awards of up to £50k for open research approaches that increase the impact of their grant
- Open Research Fund ([link](#))
 - annual funding competition launched May 2018, open to researchers and teams from around the world
 - awards of up to £50k to develop, pilot and evaluate cutting-edge approaches to openness
 - deadline for applications: 7 August 2018
- Data Re-use Prize (coming soon!)



Working in partnership

- committed to working in partnership with other funders to share experience and realise the benefits of open research
- would welcome the opportunity to work with Belmont Forum partners on key issues, including:
 - implementing open data policies
 - enhancing incentives for outputs sharing
 - maximising the value of outputs management plans
 - developing success factors and indicators for open science



<https://wellcomecollection.org/works/tddbvrav>

Any Questions?

